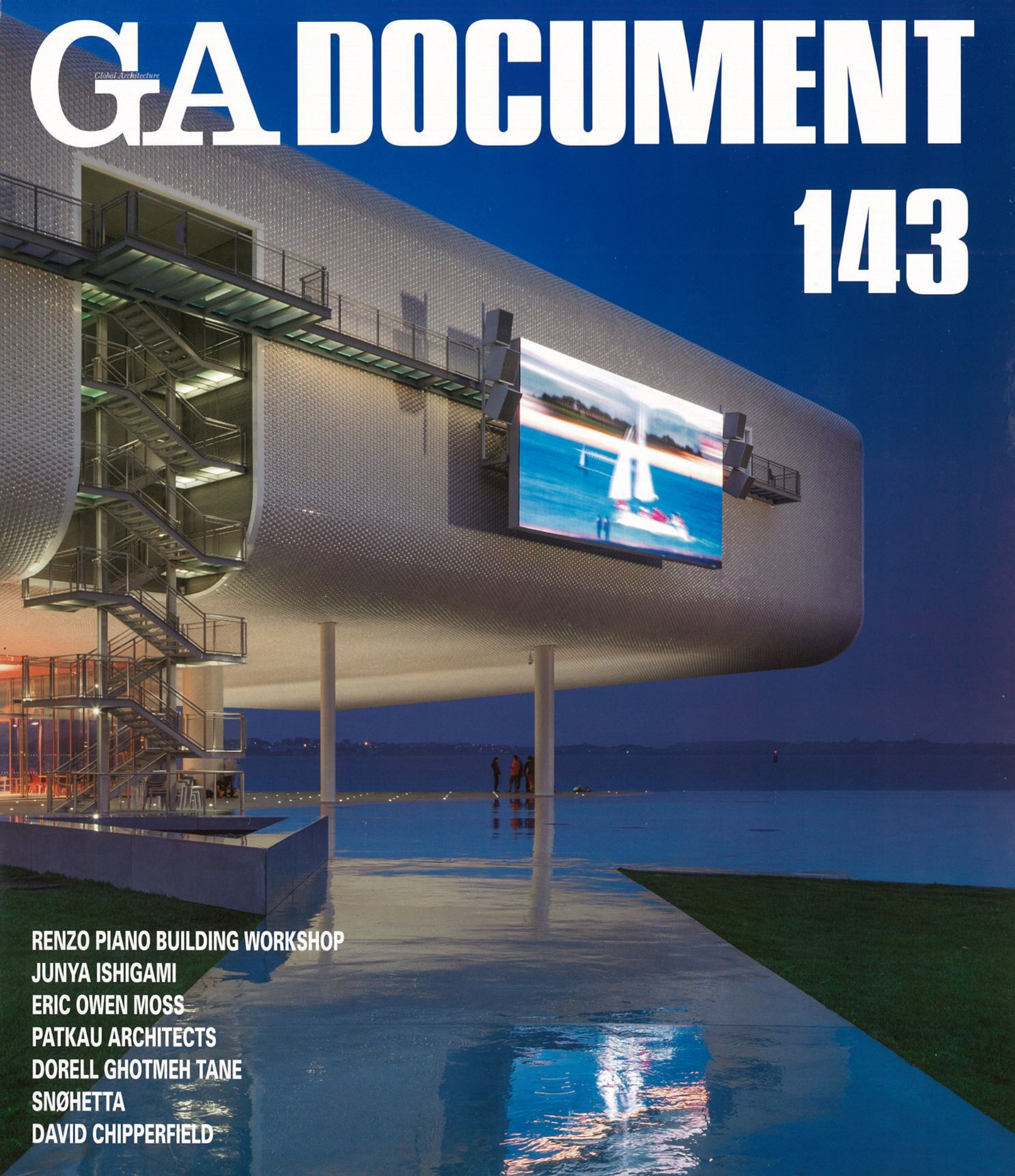


# GA DOCUMENT

Global Architecture

# 143



**RENZO PIANO BUILDING WORKSHOP**  
**JUNYA ISHIGAMI**  
**ERIC OWEN MOSS**  
**PATKAU ARCHITECTS**  
**DORELL GHOTMEH TANE**  
**SNØHETTA**  
**DAVID CHIPPERFIELD**



# DAVID CHIPPERFIELD

## INAGAWA CEMETERY CHAPEL AND VISITOR CENTRE

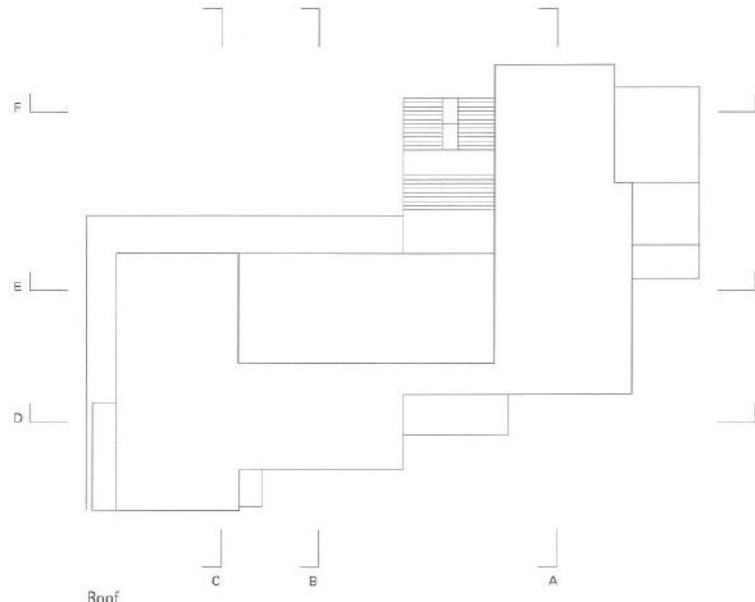
Inagawa, Hyogo, Japan  
Design: 2013-16  
Construction: 2016-17

Photos: Yoshio Futagawa

Overall view from cemetery on west 全景。西側に広がる墓地より見る







*Inagawa Cemetery* is located on a steep site in the Hokusetsu Mountain Range of the Hyogo prefecture, approximately 40 km north of Osaka. The cemetery is laid out across terraces and bisected by a monumental flight of steps leading up to a shrine at the highest point—an axis that orients the whole project.

The visitor centre and chapel are designed as a marked threshold between the outer world and a quieter space within for contemplation. Aligned with the central staircase, and as a counterpoint to the shrine, the visitor and chapel spaces are gathered around a courtyard. Visitors approach this space from an exterior platform that leads to a wide, framed central opening in the stepped south-east facade.

The programme is formally under a single,

sloping roof plane, following the view line from the entrance up to the shrine. The rooms of the visitor centre open onto the courtyard garden while the secluded chapel remains separate. It can be reached via a discrete corridor, directly accessed from the outside or up a gentle ramp from the garden. An unadorned and quiet room with minimal heating and artificial lighting offers a non-denominational contemplative space, pure in its form. Relying on indirect sunlight from the gardens on either side, the chapel visitor finds seclusion and their focus is drawn to the essential rhythms of time through the natural indicators of daylight fluctuation and seasonal foliage changes. The planting of all the gardens is inspired by the palettes and textures of Japanese meadows and woodlands and a selection

of grasses, shrubs and wildflowers are carefully juxtaposed.

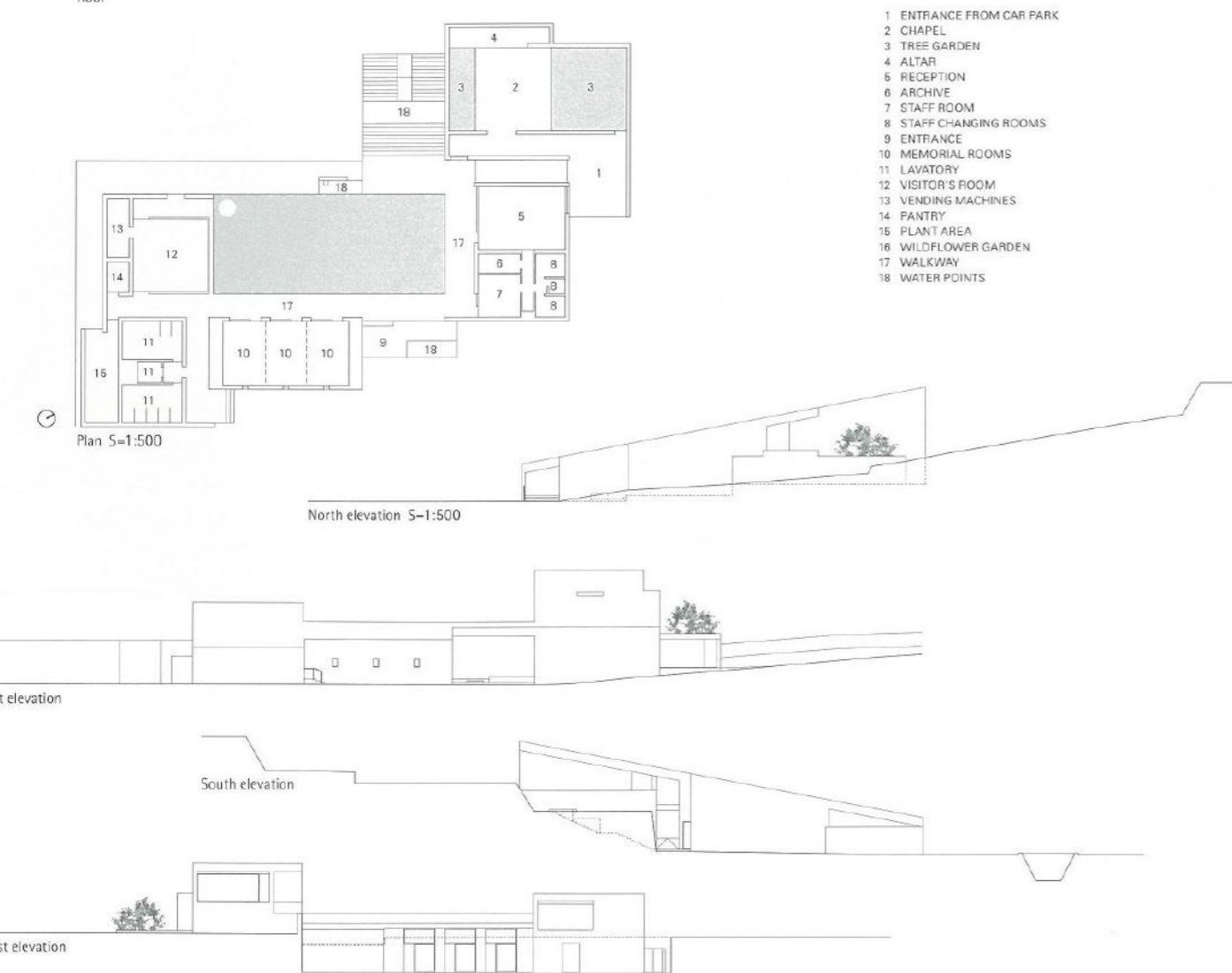
On the diagonally opposite corner of the courtyard is the visitor centre. Two large rooms at the lower end of the roof provide for family gatherings and commemorations. The visitors lounge offers an informal area for resting and eating. The memorial room, which can be separated into three smaller rooms by pleated curtains made with washi paper on fabric, offers space for formal feasts after rituals.

The floors, walls and roof are formed as pure building elements and poured from the same earth-like red coloured concrete—honed for internal floors and ground and sandblasted for walkway walls and soffits—giving the overall structure a monolithic

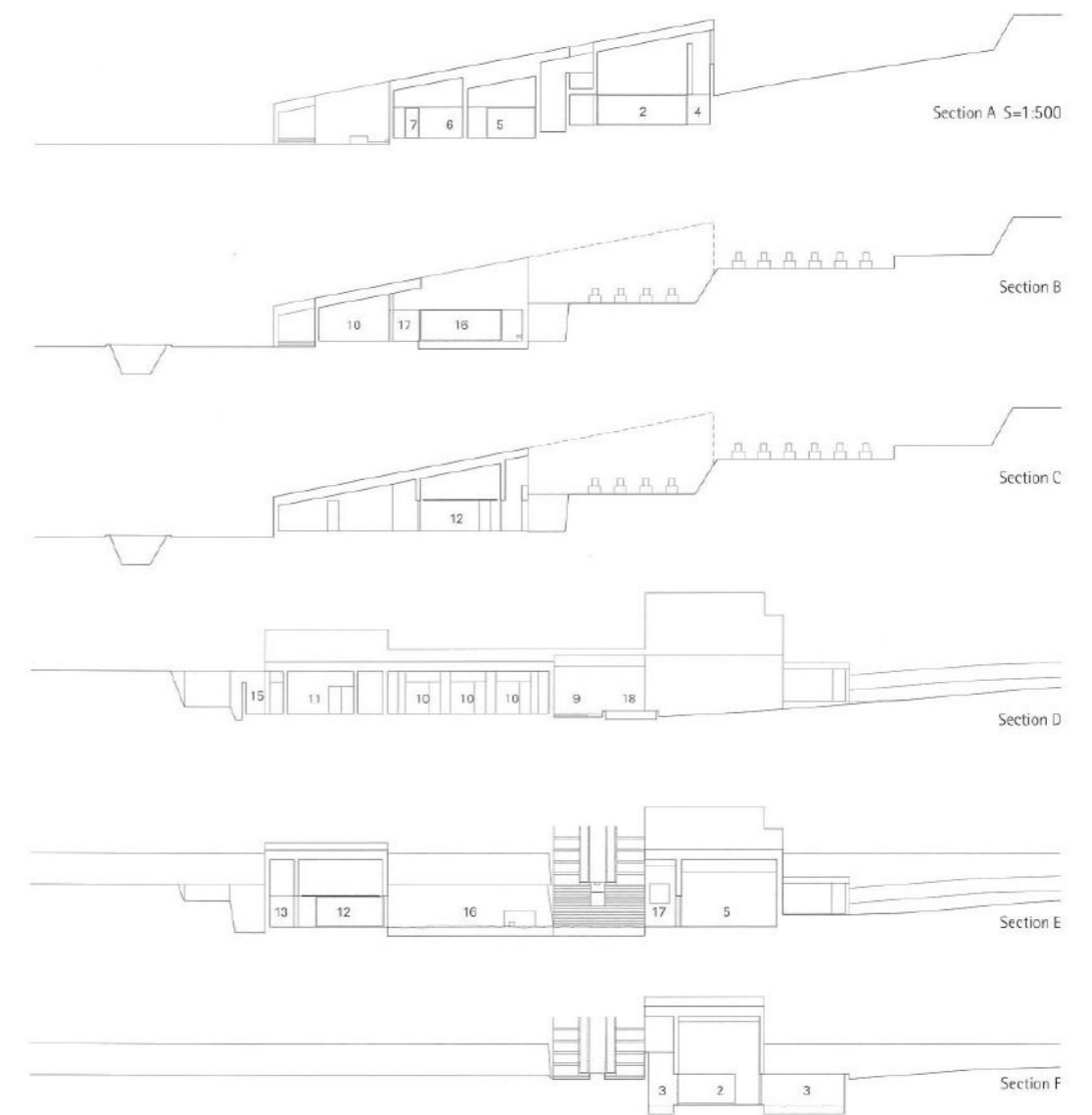
appearance. A range of furniture designed specifically for the project consisting of simple, informal painted wooden chairs, benches, tables can be re-arranged depending on the occasion.

Following the axial link between the two ends of site, a rill carries water down the middle of the staircase from the top of the mountain directly towards the building. As it approaches the lower part of the staircase near the chapel, the running water slows and pools as it collects into a trough, then is diverted through a new underground channel under the site to the nearby canal.

*David Chipperfield, May 2017*



- 1 ENTRANCE FROM CAR PARK
- 2 CHAPEL
- 3 TREE GARDEN
- 4 ALTAR
- 5 RECEPTION
- 6 ARCHIVE
- 7 STAFF ROOM
- 8 STAFF CHANGING ROOMS
- 9 ENTRANCE
- 10 MEMORIAL ROOMS
- 11 LAVATORY
- 12 VISITOR'S ROOM
- 13 VENDING MACHINES
- 14 PANTRY
- 15 PLANT AREA
- 16 WILDFLOWER GARDEN
- 17 WALKWAY
- 18 WATER POINTS



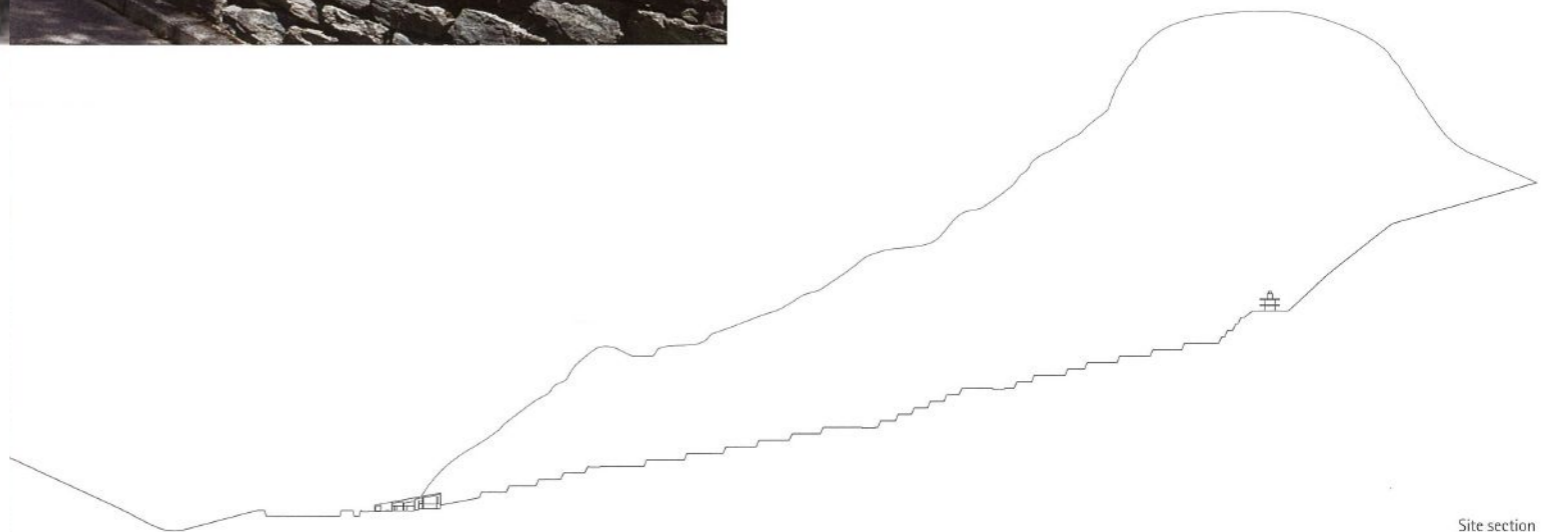




View toward entrance from east. Cemetery situated on terrace of hill behind building  
東より入口方向を写る。建物の奥の段丘に墓場が広がる



Entrance and water point 入口。手前は手水鉢

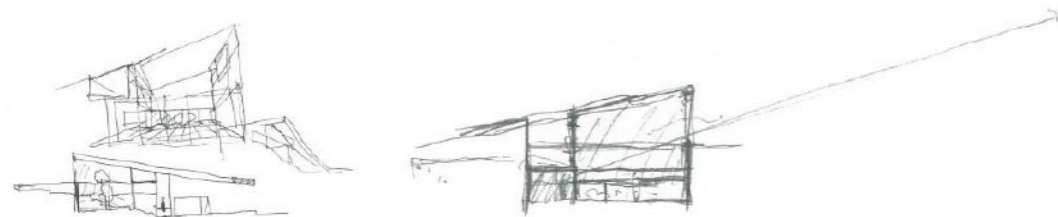


Site section





View from north toward chapel. Car park on left 北より礼拝堂のヴォリュームを見る。左は駐車場



Concept sketches by David Chipperfield

「猪名川霊園」は、大阪市から北へ約40kmに位置する。兵庫県は北摂山系の急斜面にあります。ひな壇状に構成された霊園の中央を一本の階段がまっすぐに貫き、その頂点に納骨堂が立っています。この階段のラインこそは、建築の配置を決定づける軸線となりました。

礼拝堂と休憩棟は、ここを訪れる人々を折りのための静かな空間へと誘う場所として設計されています。山の中央階段の延長線上、納骨堂と反対の極をなす地点に、来園者の折りと休憩のための空間を、中庭を取り囲むように配しました。来園者は屋外のアプローチから、南東面中央の大きな開口部をくぐり、一段上がったこの空間に入ります。

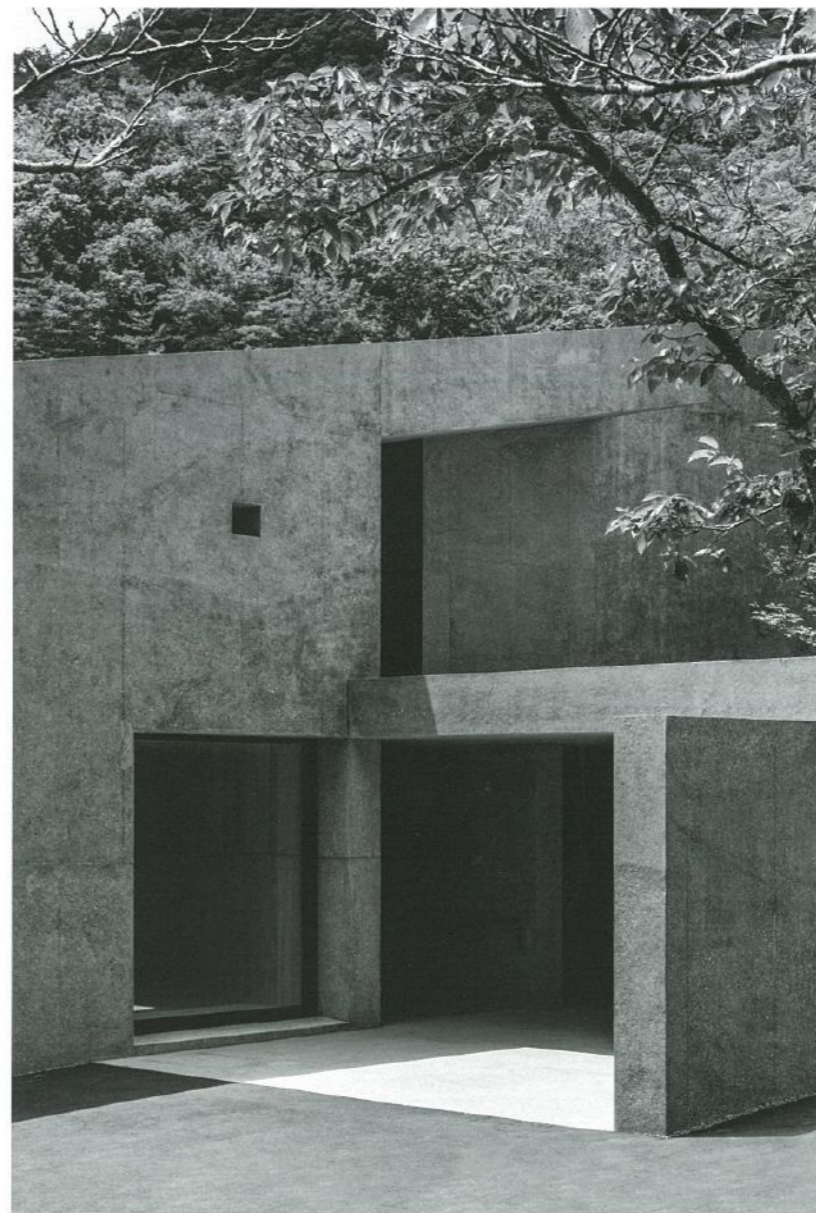
建物の構成としては、すべての機能を一枚の片流

れの屋根の下に収め、そのラインが、エントランスから納骨堂を見上げたときの視線に沿うようにしました。休憩棟の部屋はいずれも中庭に開かれている一方、礼拝堂だけは切り離されています。礼拝堂へは専用通路で外から直接入ることもでき、また、中庭から伸びるゆるやかな斜路を上って到達することもできます。最小限の暖房と照明しかない、無垢で静謐なこの部屋は、宗派を問わない純粋な折りの場です。礼拝堂を訪れた人々にとっては、庭の両側から間接的に差し込む自然光が頼りとなり、ここで外界から遮断されるにつれ、刻々と変化する光や四季の移り変わりが刻む自然のリズムへと、感覚が研ぎ澄まされていきます。庭はいずれも、日本の野山の色合いと質感を思い浮かべながらつくったもので、

精選した種々の山野草や低木を緻密に配しています。

中庭を挟んだ斜め向かいが休憩棟です。低い方の屋根の下に配した二つの大きな部屋は、親族の集いや故人を偲ぶ場として使います。ピジターラウンジは、気軽に休憩したり、食事をしたりできる部屋です。メモリアルルームは、布に和紙を重ねた屏風式のカーテンで三つの部屋に仕切ることができ、そこでは法事の後の会食を行います。

建物は床も壁も屋根も、純粋な建築の要素として形づくられています。いずれも赤土色に着色したコンクリートを素材とし、内部の床は磨き仕上げ、回廊の壁と軒下はサンドブラスト仕上げを施して、建物全体を一つの岩の塊のように見せています。

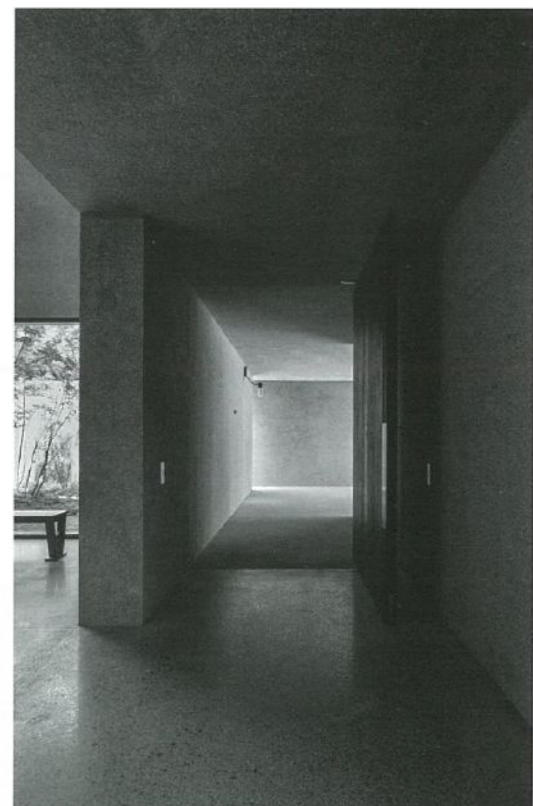


Entrance from car park 駐車場からの入口

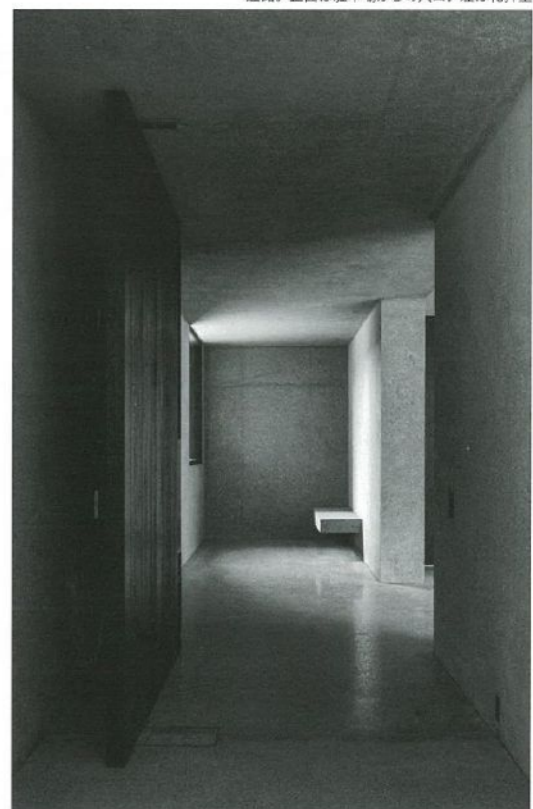
家具はすべてこの場所のために特別にデザインし、製作しました。彩色を施したシンプルでカジュアルな木製の椅子、ベンチ、テーブルを、用途に応じて組み替えながら使います。

敷地の両極を結ぶ軸線ともなっている急斜面の階段の真ん中を、山からの水が建物に向かって流れてきます。礼拝堂の脇に位置する、階段の麓の部分に来ると水は速度を緩めて水盤にいったん貯まり、そこから新しい地下水路に落ちて、すぐそばの小川へと向かいます。

(デイヴィッド・チップパーフィールド、2017年5月)



Hallway to entrance from car park. Chapel on left 通路。正面は駐車場からの入口。左は礼拝堂

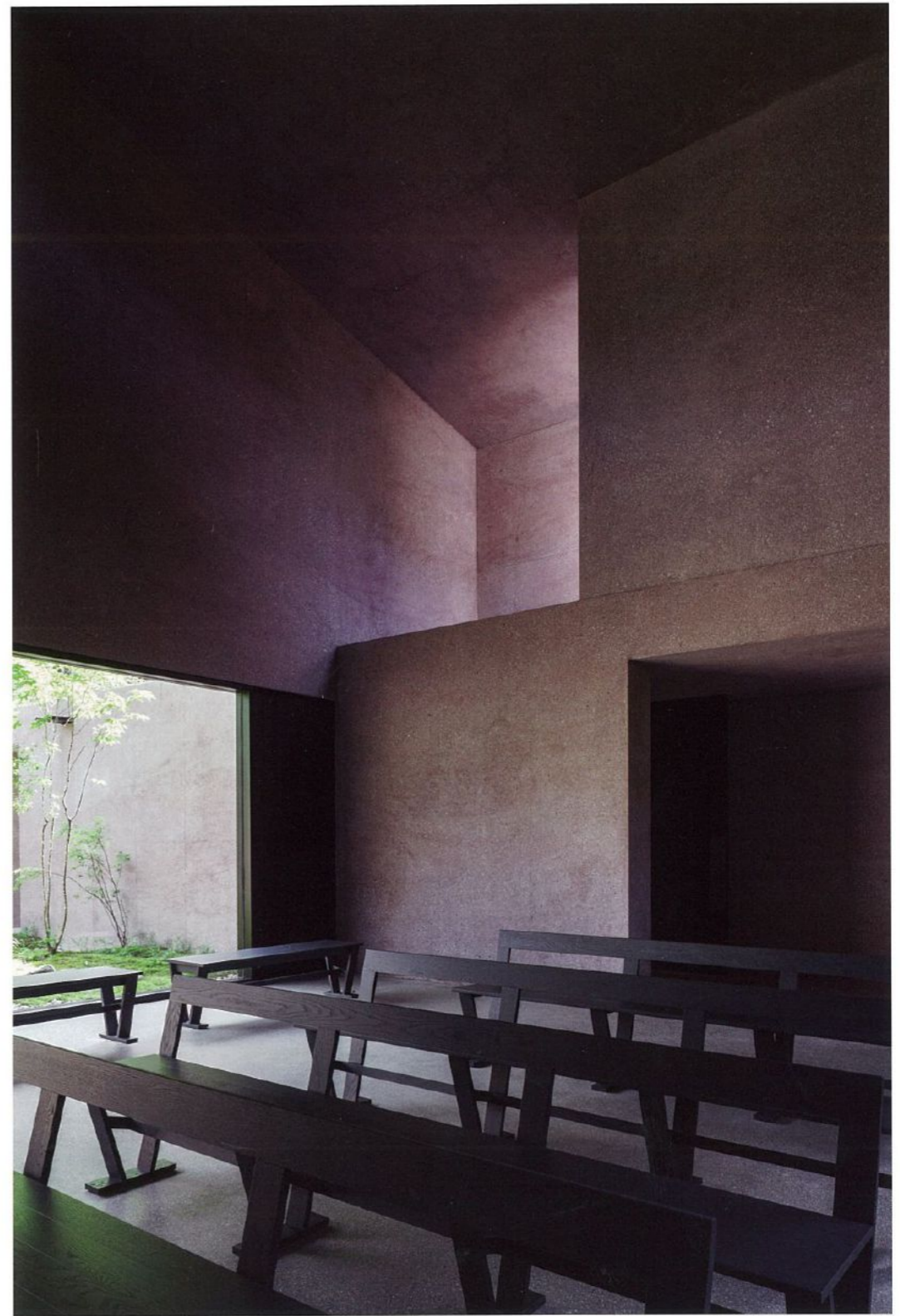


Hallway: view from entrance from car park. Chapel on right 通路：駐車場からの入口より見る。右は礼拝堂





◁ Chapel: view toward altar 礼拝堂：祭壇を見る



Corner of chapel: natural light and alcove bring diverse shadows  
礼拝堂隅部：外光と壁面の窪みが様々な陰影をもたらす

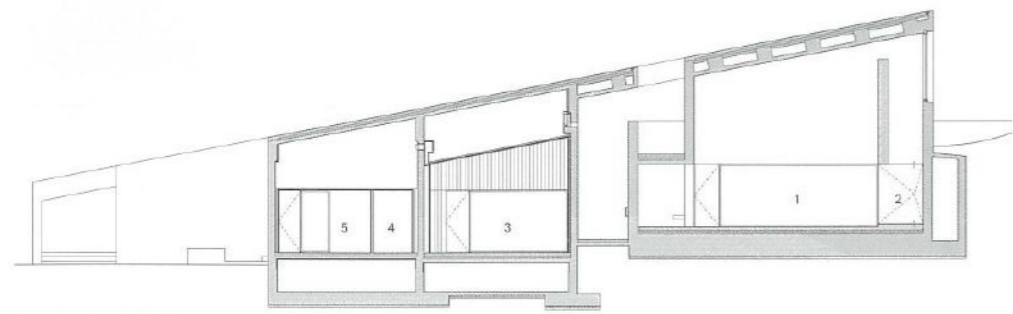




Chapel: view toward tree garden. Ceiling rises from east to west.  
 礼拝堂：樹々の庭を見る。天井は、東から西に向けてせりあがる

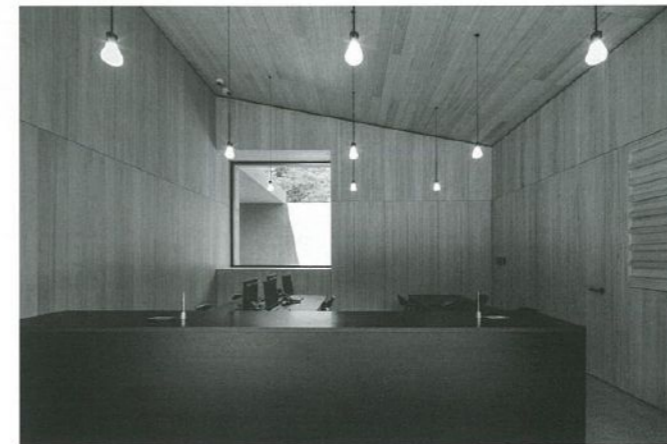


Chapel: entrance on left 礼拝堂：左は入口



Chapel section S=1:250

- 1 CHAPEL
- 2 ALTAR
- 3 RECEPTION
- 4 ARCHIVE
- 5 STAFF ROOM



Reception 受付



Memorial room メモリアル・ルーム





Wildflower garden 山野草の庭



View of chapel. Wildflower garden on right below 礼拝堂のヴォリュームを見る。右下は山野草の庭

Architects: David Chipperfield Architects—David Chipperfield, director-in-charge; Tom Herre, Matt Ball, Patric Ueberbacher, Amandine Kastler, project architect  
Client: Boenfukyukai Foundation  
Project manager: Office Kawamura—Naoko Kawamura

Associate architect: Key Operation Inc. / Architects—Akira Koyama, Akira Hanjo  
Consultants: Jun Sato Structural Engineering, structural; ES Associates, MEP; Viabizzuno Srl, lighting; Marcia Iwatate + Kamimura Landscape Architects, landscape; Hayashi Takuma Design Office, signage; Cassina inc. Ltd., furniture;

NUNO Corporation, textile  
Contractor and executive architect: Obayashi Corporation  
Program: chapel and visitor centre for cemetery  
Structural system: reinforced concrete  
Major materials: honed and sandblasted red-coloured concrete across walls, roof

and walkways, with black-stained oak doors and blackened steel windows; internal walls and ceilings in white-stained Hemlock boards.  
Total area for cemetery: 144,477.28 m<sup>2</sup>  
Site area: 2,100 m<sup>2</sup>  
Building area: 631.08 m<sup>2</sup>  
Total floor area: 493.08 m<sup>2</sup>



